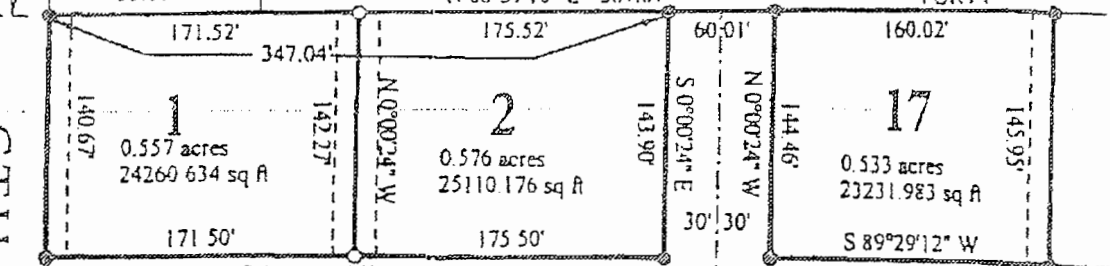


UNPLATTED LANDS.

FORTY

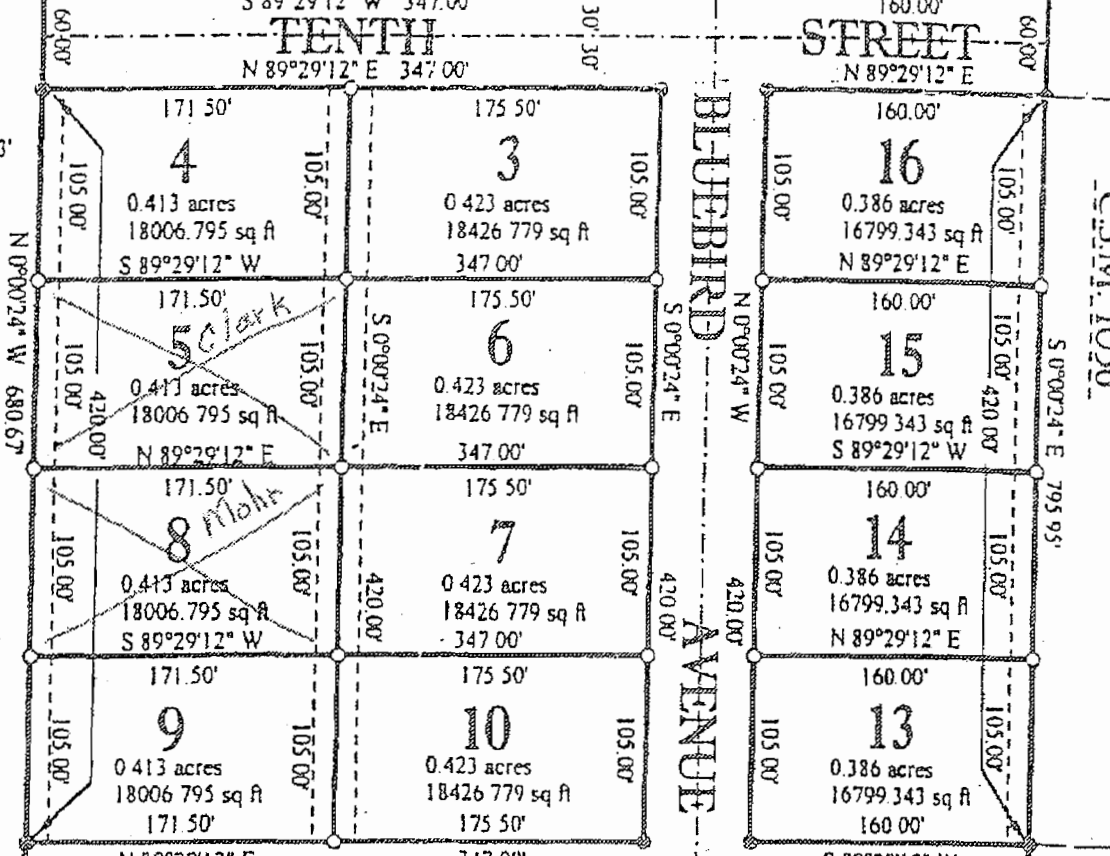
N 88°57'10" E 33.01'

N 88°57'10" E 567.07'



TENTH

STREET



BLUEBIRD

AVENUE

C.S.M. 1050

33' 33'

D II

33' 33'

1323.37'
2646.74'

W 1/4 COR 31-29-1W SURVEY NAIL (FND)

C.S.M. 914

FUTURE DEVELOPMENT OWNED BY PLATTER

C.S.M. 1056

UNPLATTED LANDS

